

### Quick installation guide

Full manual is available on [www.satel.pl](http://www.satel.pl). Scan the QR code to go to our website and download the manual.



**The device should be installed by qualified personnel.**

**Changes, modifications or repairs not authorized by the manufacturer shall void your rights under the warranty.**

**Disconnect power before making any electrical connections.**

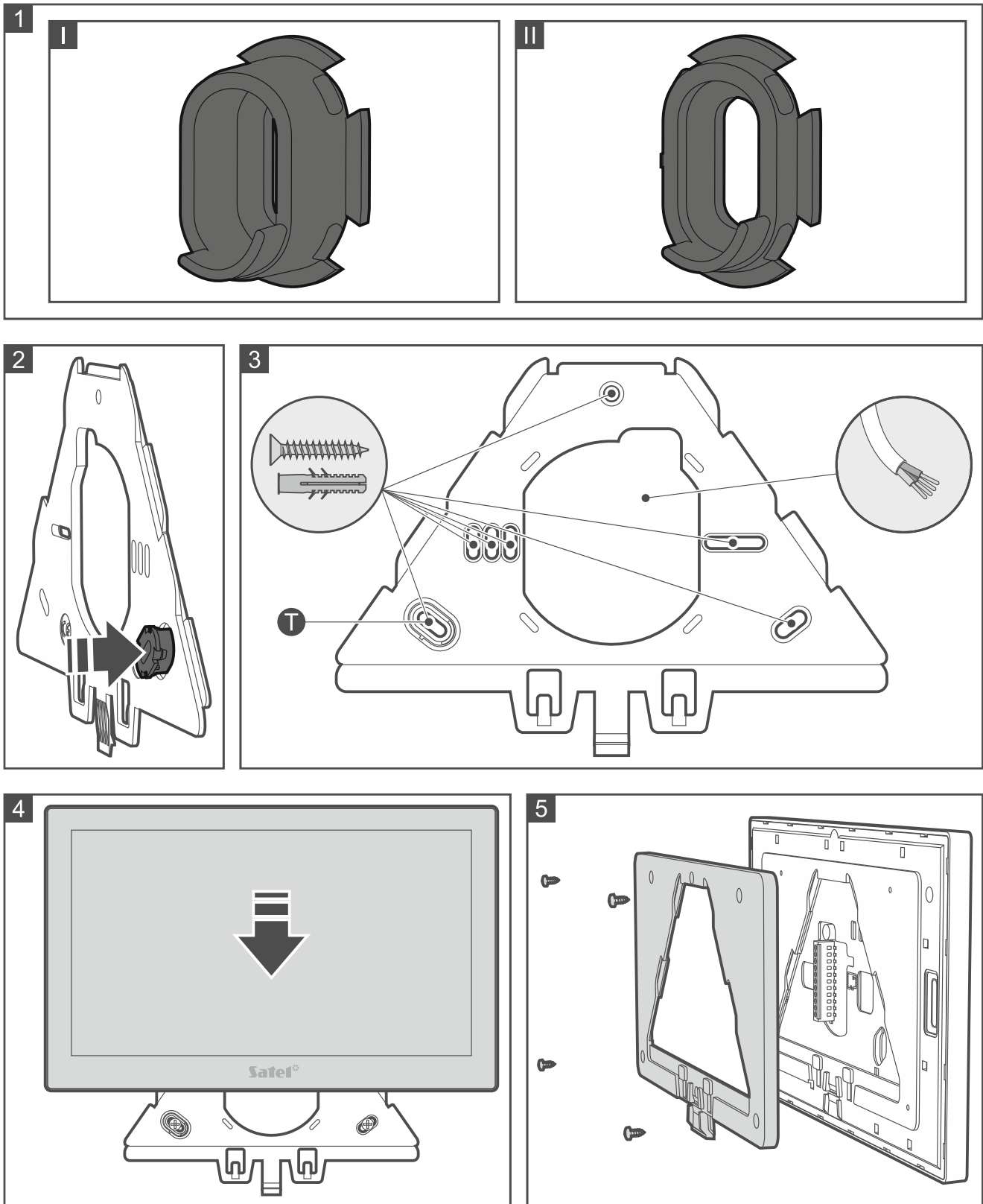
### Tips for installation

- The keypad should be installed indoors, in spaces with normal air humidity.
- Do not install the keypad outdoors.
- The place of installation should be readily accessible to the system users.
- To make the connection, use an unshielded non-twisted cable. If you use the twisted-pair type of cable, remember that CLK (clock) and DTA (data) signals must not be sent through one twisted-pair cable.
- The wires must be run in one cable.
- The length of cable must not exceed 300 m.
- The keypad can be powered from the control panel, from an expander with power supply or from an additional power supply.

### Installation

#### Wall mounting

1. Install the large tamper insert (Fig. 1-l) on the bracket (Fig. 2).
2. Place the bracket against the wall and mark the location of the mounting holes (Fig. 3) and the hole in the tamper insert (the **T** symbol in Fig. 3).
3. Drill the holes in the wall for wall plugs (anchors) in the marked spots. Use wall plugs specifically intended for the mounting surface (different for concrete or brick wall, different for plaster wall, etc.).
4. Run the cables through the hole in the bracket (Fig. 3).
5. Secure the bracket to the wall with screws.
6. Secure the tamper insert to the wall with a screw.
7. Screw the wires to the keypad terminals (see "Connecting").
8. Mount the keypad on the bracket (Fig. 4).



### Mounting to the junction box

1. Mount the junction box on the wall and run the cables into the box.
2. Remove the screws and remove the enclosure base (Fig. 5).
3. Install the small tamper insert (Fig. 1-II) on the bracket (Fig. 2).
4. Place the bracket against the junction box so that the holes in the bracket align with the mounting holes in the junction box. Mark the location of the hole in the tamper insert on the wall (the **T** symbol in Fig. 3).

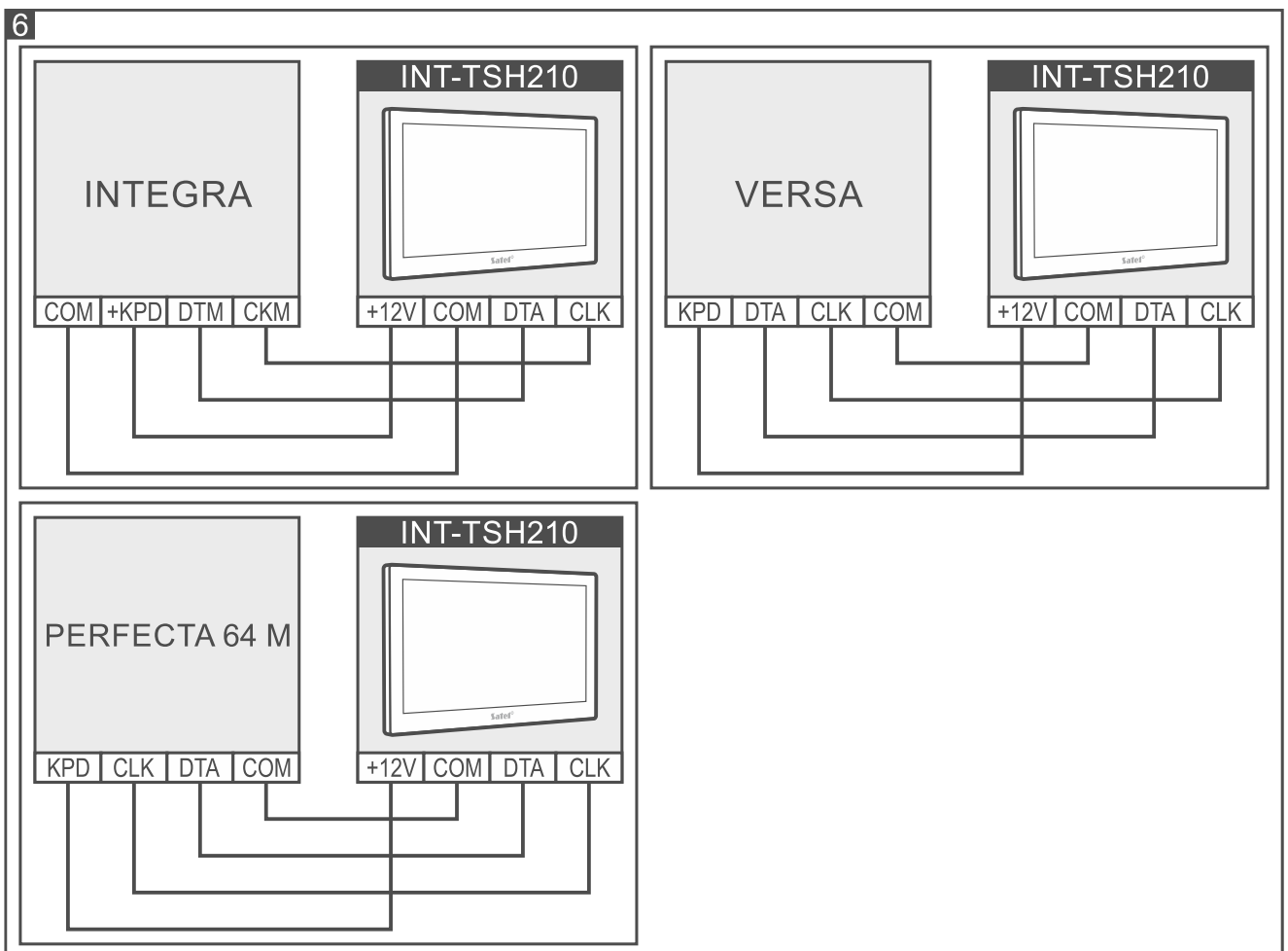
5. Drill a hole in the wall for a wall plug (anchor) in the marked spot. Use a wall plug specifically intended for the mounting surface (different for concrete or brick wall, different for plaster wall, etc.).
6. Run the cables through the hole in the bracket (Fig. 3).
7. Secure the bracket to the junction box with screws.
8. Secure the tamper insert to the wall with a screw.
9. Screw the wires to the keypad terminals (see “Connecting”).
10. Mount the keypad on the bracket (Fig. 4).

**Connecting**

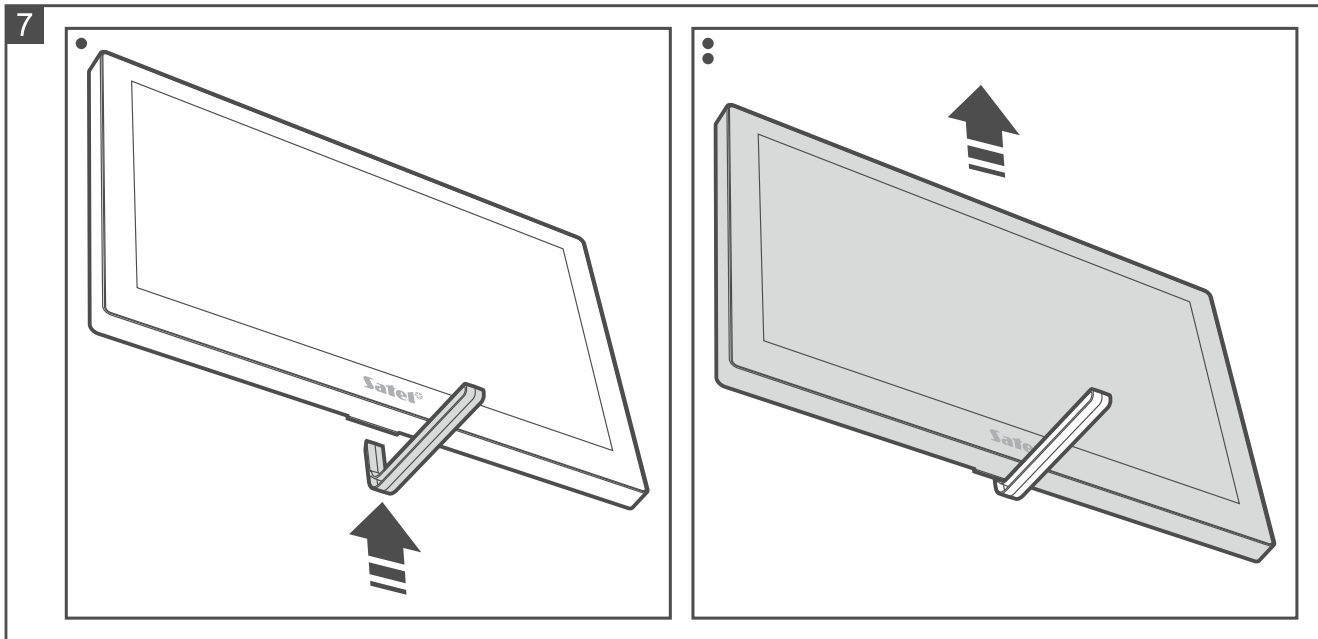
1. Connect the DTA, CLK and COM keypad terminals to the terminals of the control panel communication bus (Fig. 6).
2. If detectors are to be connected to the keypad zones, connect the wires to the Z1, Z2 and COM terminals (**the keypad COM terminal must be used**). Connect the detectors in the same way as to the control panel onboard zones.
3. Screw the power wires to the +12V and COM terminals.

**Description of terminals**

- +12V** - power input.
- COM** - common ground.
- DTA** - data.
- CLK** - clock.
- RSA, RSB** - terminals intended for future applications (RS-485).
- OT1, OT2** - terminals intended for future applications (outputs).
- Z1, Z2** - zones.



## Removing the keypad from the bracket



To remove the keypad from the bracket, use the tool supplied with the keypad (Fig. 7).



*If the alarm system is at work, start the service mode before you remove the keypad from the bracket (see the full installer manual). Otherwise you will generate a tamper alarm by removing the keypad from the bracket.*

### Starting

Turn on the power, set the address and identify the keypad (see the full installer manual).

The declaration of conformity may be consulted at [www.satel.pl/ce](http://www.satel.pl/ce)