

*Roger Access Control System***Roger PIN Generator****Mobile App****Operating Manual***Software Version: v1.0**Document Version: Rev. A*

This document is subject to the Terms of Use in the current version, published on the website www.roger.pl

DESIGN AND PURPOSE

Roger PIN Generator (RPG) is an application for ADL-2 electronic locks from Roger, which allows to generate PIN codes, modify account settings on the rps.roger.pl website and configuration settings of managed electronic locks.

INSTALLATION AND CONFIGURATION OF THE APPLICATION

The Roger PIN Generator app requires Android 5.0/iOS 12.0 or later. The apps are available on the Play Store and App Store, respectively. Once installed, the app is ready for configuration.

To use Roger PIN Generator (RPG) it is required:

- Creating an account on the <https://rps.roger.pl/> website
- Defining electronic locks in the web service that are to be operated from the level of RPG application
- Enabling the Roger PIN Service API option in the account settings (it is required to contact the system administrator by e-mail at rpsadmin@roger.pl)
- Importing an API key from the API service subpage https://rps.roger.pl/api_settings

MEANING OF OPTIONS**Section: Settings****Option: Clear Local Data**

Wipes the data of RPG app stored on your phone.

Option: Open System Settings

Opens the application settings windows.

Option: Language

Allows to select the language (available: Polish or English).

Option: API Key For rps.roger.pl

Starts reading the QR code to import the API key on the https://rps.roger.pl/api_settings website.

Section: Common Settings**Option: Send SMS Upon PIN Creation**

Allows to enter a phone number, to which the PIN code generated in the application will be sent after creation. Most often it will be the phone numbers of people who would like to be informed about all the codes generated for a given lock.

Option: Send Mail After PIN Creation

Allows to enter an e-mail address to which information about each generated PIN code will be sent.

Option: Lock Description

Allows to enter an additional description that will be sent after each PIN code is generated. The description will apply to all locks defined within the account.

Option: Default Check-in Hour

Allows to select the default time at which the operation of the **PIN Guest 12** code will be activated.

Option: Default Check-out Hour

Allows you to select the default time at which the **PIN Guest 12** code will be deactivated.

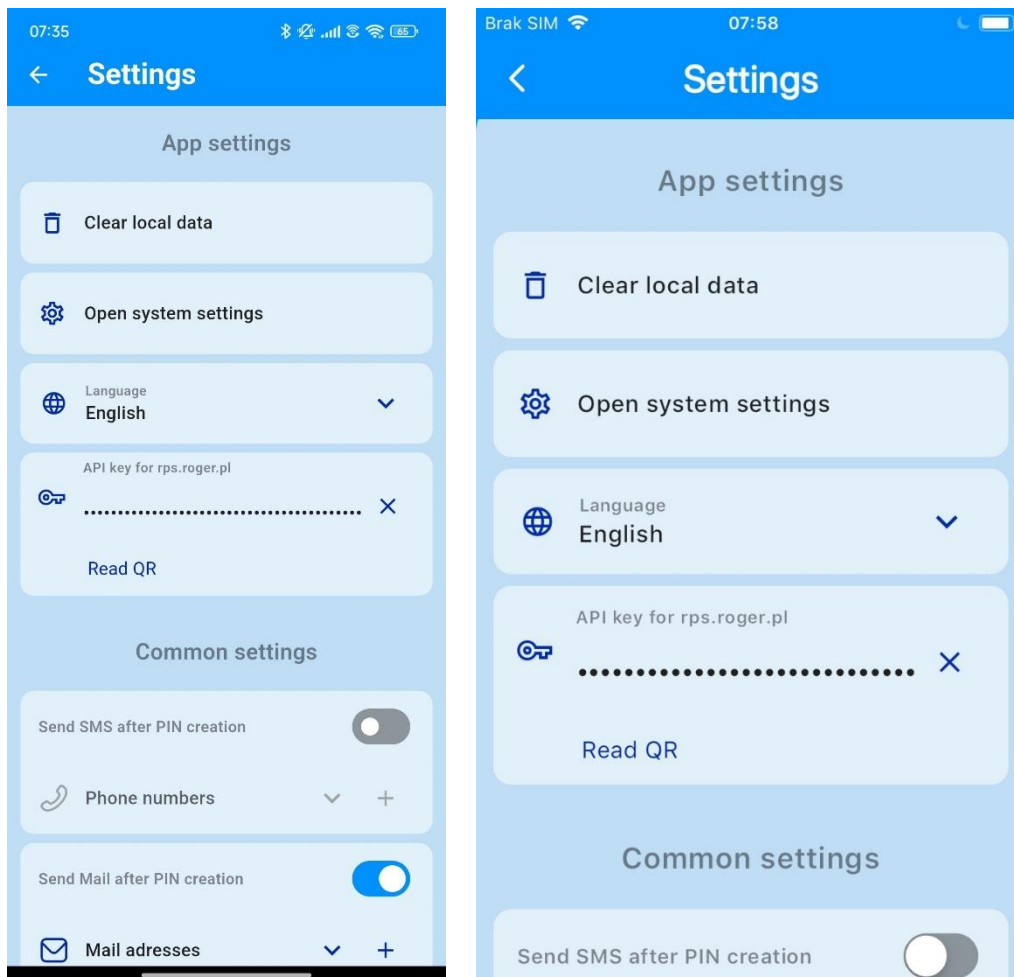




Fig. 1 Application settings view (Android, iOS)

PROGRAM FEATURES

Generate a PIN from an app

To generate a new PIN, select the appropriate lock from the main view, then click on the icon 

and . Then the "Add New PIN" window will appear. Select the PIN type and enter the required and optional details, then click the "Add" button.

Note: A description of the different types of PIN codes and the parameters required to generate them can be found in [the ADL-2 Lock User Manual](#) available on the roger.pl website.

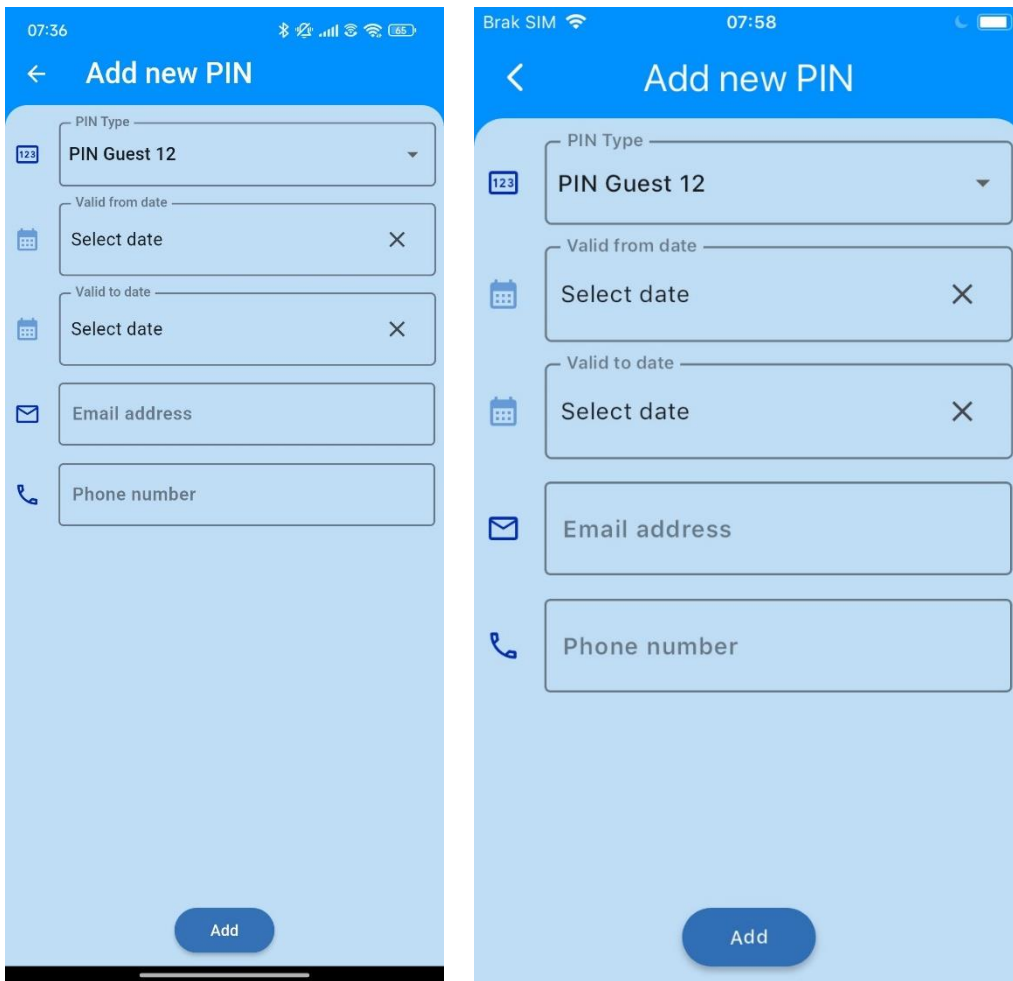




Fig. 2 View of adding a PIN code (Android, iOS)

Lock settings management

The Roger PIN Generator application allows to edit the ADL-2 lock settings. To do this, select the appropriate lock from the main view and then click on the  icon and then .

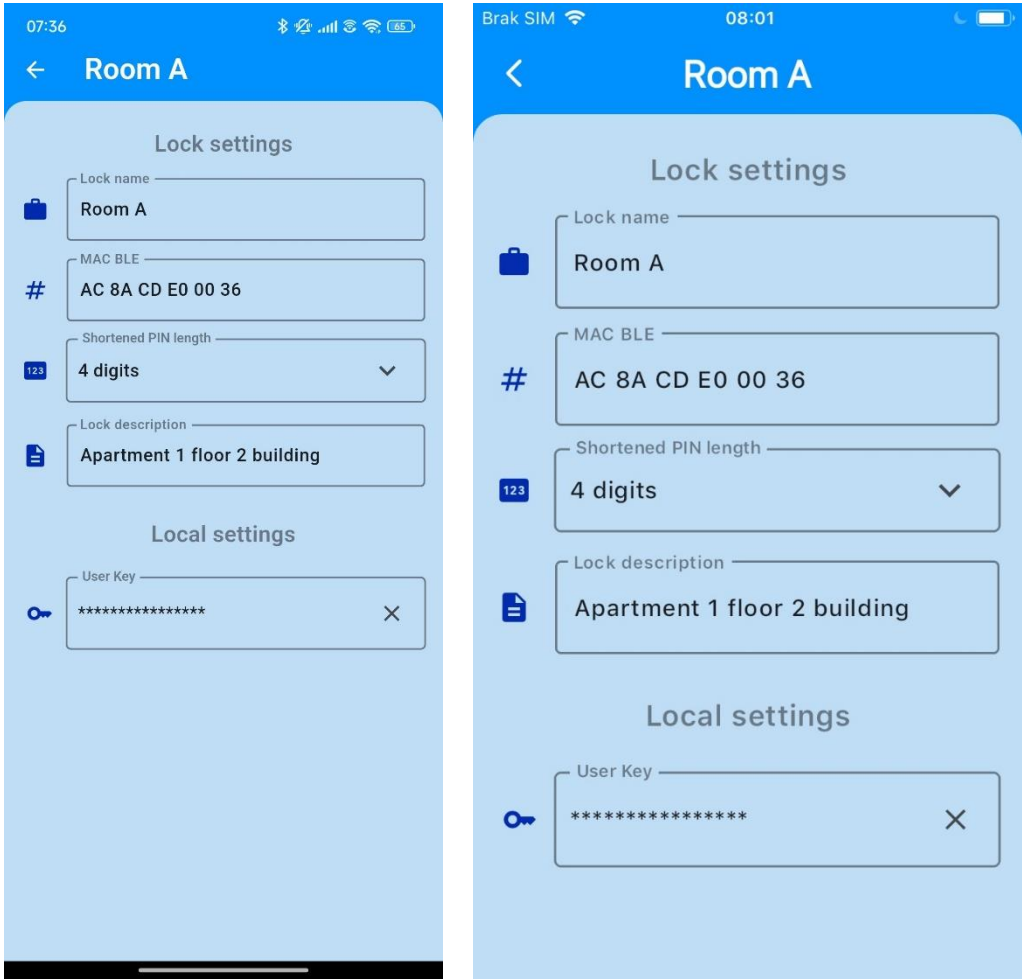


Fig. 3 ADL-2 lock settings editing view (Android, iOS)

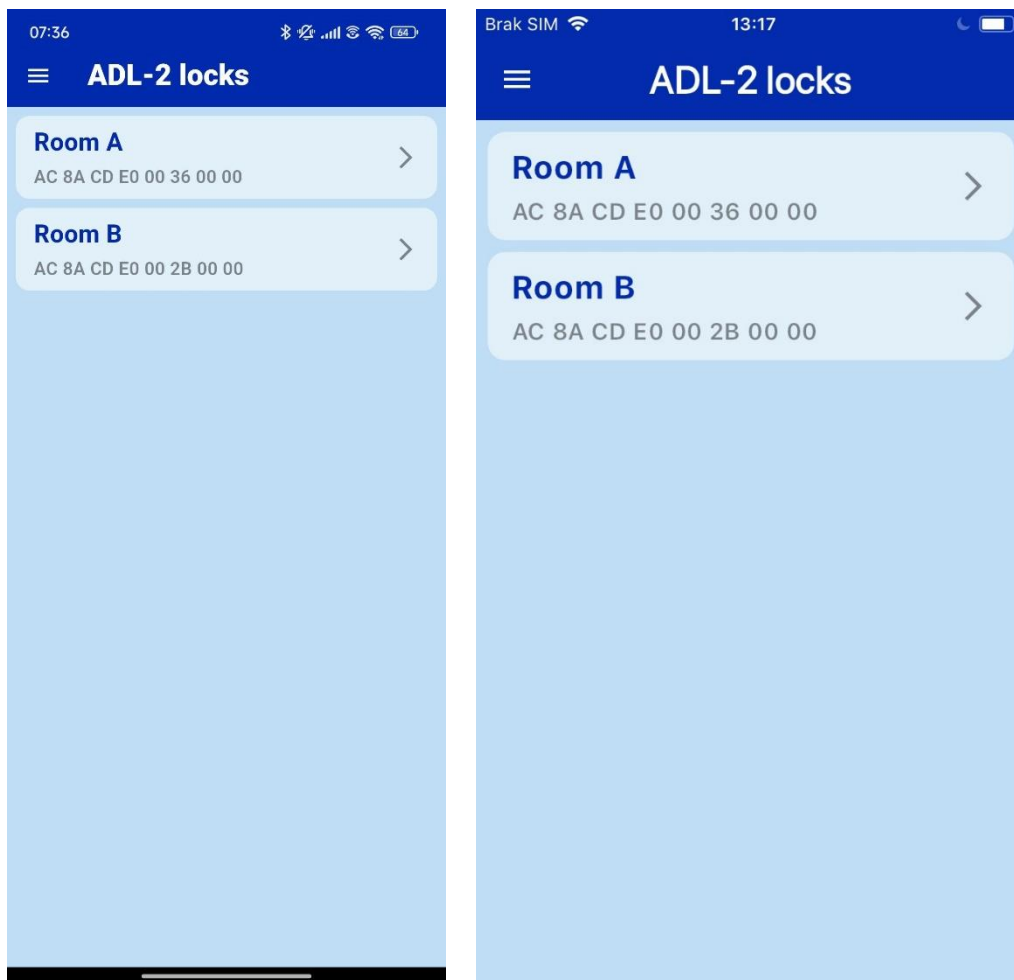


Fig. 4 Main view of the added ADL-2 locks (Android, iOS)

Contact:
Roger sp. z o. o. sp. K.
82-400 Gościszewo 59
Tel.: +48 55 272 0132
Fax: +48 55 272 0133
Tech. support.: +48 55 267 0126
E-mail: biuro@roger.pl
Web: <http://www.roger.pl>